

Representing Multiword Expressions on the Web with the OntoLex-Lemon model

John P. McCrae¹, Philipp Cimiano², Paul Buitelaar¹ and Georgeta Bordea¹

¹Insight, NUI Galway; ²CITEC, Bielefeld University

- W3C Community Group  has developed OntoLex-Lemon

- For representation of lexicons relative to ontologies

- Five modules: Core, Variation & Translation, Syntax-Semantics, Decomposition and Metadata

- Decomposition module represents entries as constituents

- Can map syntactic frames to predicates

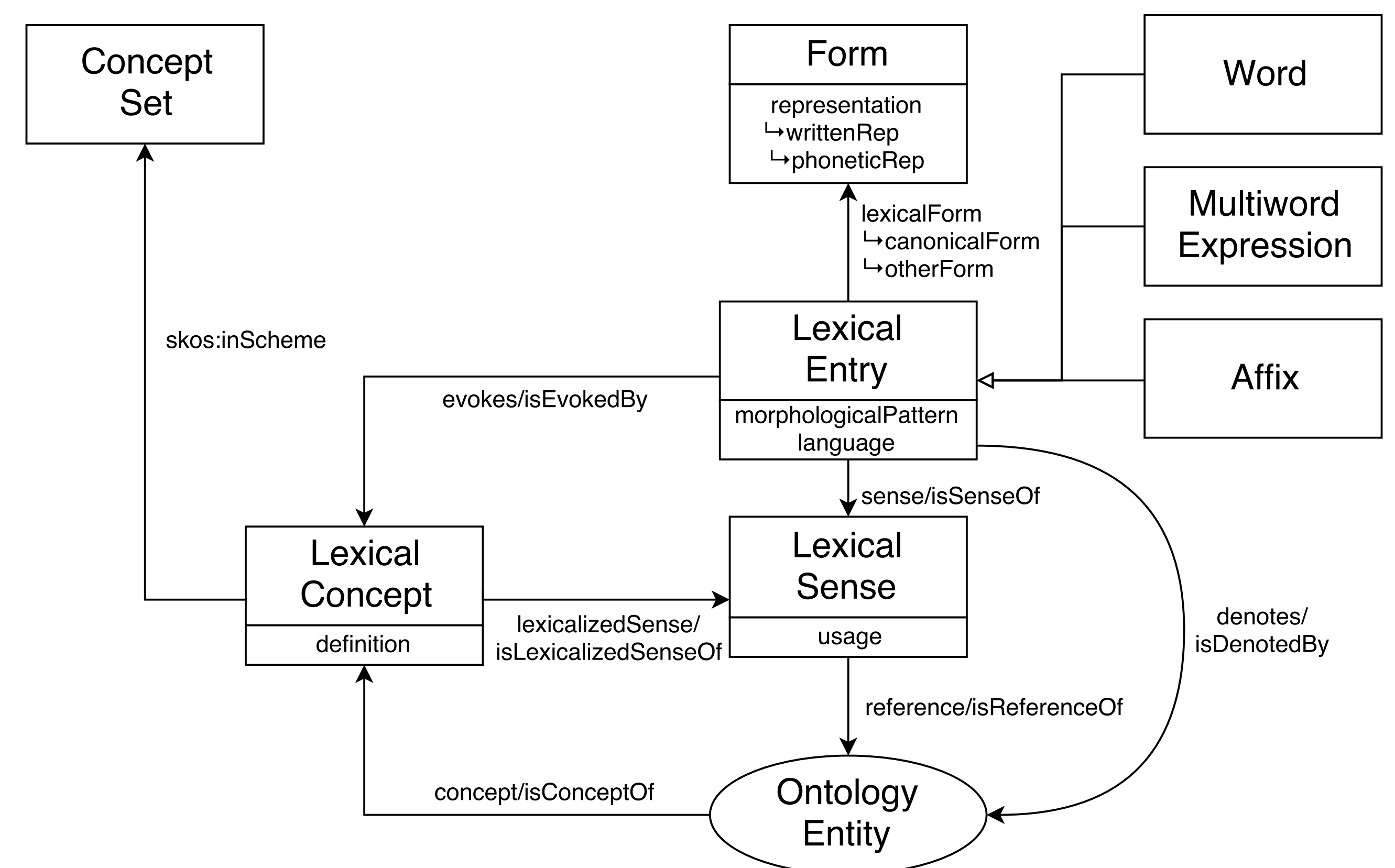


Fig 1. The OntoLex-Lemon Core Model

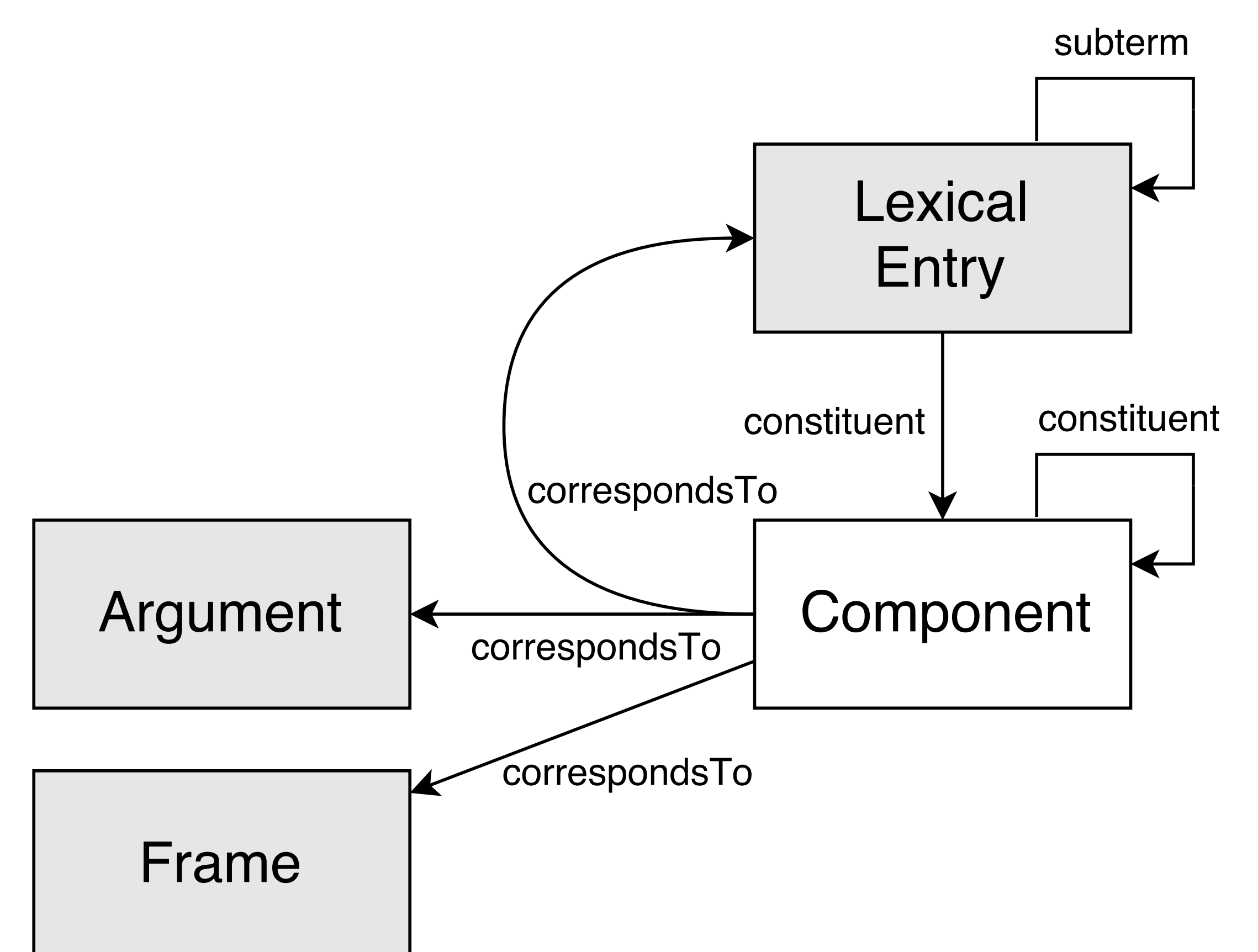
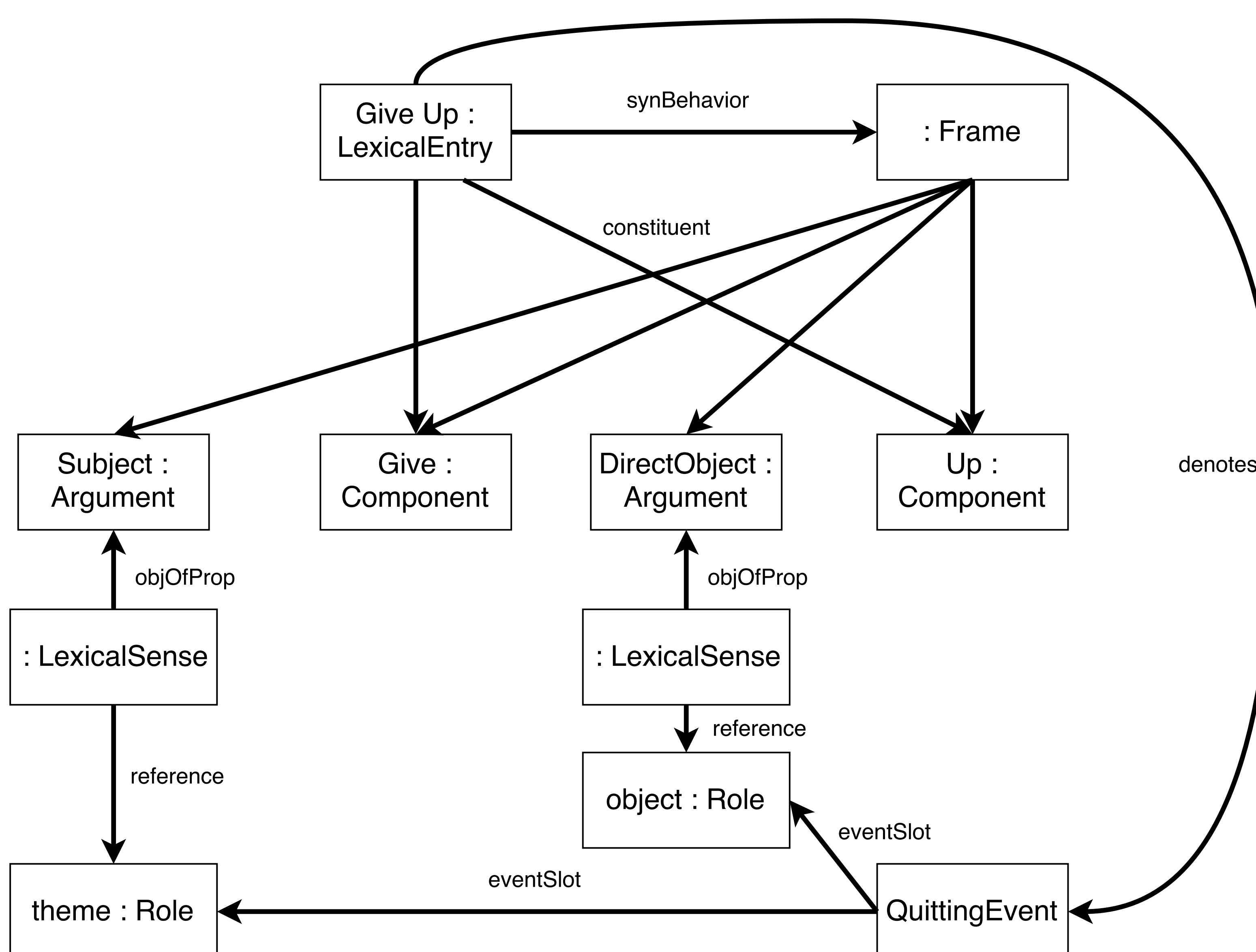


Fig 2. The OntoLex-Lemon Decomposition Module



Ex 1. Mapping "give up" to an ontological event

```

:PoblachtNahEireann a
  ontolex:MultiwordExpression ;
  rdfs:label "Poblacht na hÉireann"@ga ;
  decomp:constituent :poblacht, :na, :hEireann ;
  rdf:_1 :poblacht ; rdf:_2 :na ;
  rdf:_3 :hEireann ;
  ontolex:denotes dbpedia:Republic_of_Ireland .
  
```

```

:hEireann a decomp:Component ;
  lexinfo:case lexinfo:genitive ;
  lexinfo:lenition true ;
  decomp:correspondsTo :Eire .
  
```

```

:Eire a ontolex:Word ;
  ontolex:denotes dbpedia:Ireland ;
  rdfs:label "Éire"@ga .
  
```

Ex 2. Decomposing the Irish term "Poblacht na hÉireann" (Republic of Ireland)